



OWL WORKSHOP

#

November 10-11, 2017

Welcome to Camp Zama, Japan!

Thank you for attending the Organic World Language workshop hosted at Camp Zama, Japan. In this brochure, you will find links and helpful information regarding travel. If you have any questions or need assistance, please email

Jodi.weiler@pac.dodea.edu

Arriving in Japan

There are two airports you can fly into: Narita and Haneda. Narita airport is approximately 3 hours from Camp Zama by bus. Haneda airport is closer and requires less travel time, about 1.5 hours.

Q: How can I get from Narita airport to Camp Zama?

A: If you are a Military ID holder, your best bet is to take the airport shuttle bus directly from Narita Airport Terminal #1 parking lot directly to Camp Zama Lodging. Cost is \$30. You do not need to have a reservation (although this is recommended), you can pay upon arrival. However, you must have a Military ID on your person. For more details, visit the [website](#) and view the illustration on Page 2.

Q: I don't have a Military ID, how do I get to Camp Zama?

A: There are several trains and buses that run from both airports. Once you pass immigration at Narita, there is a bus ticket counter. You will buy a ticket going to Sagami-Ono station. That bus will arrive at Bus Stop #9 and costs ¥3600. Once you arrive at Sagami-Ono station, you can take the train or a taxi to your lodging. Visit the [Narita Airport Website](#) for more transportation information.

B: From Haneda International terminal, please take Bus #9, and #11 from the domestic terminal. The cost is ¥1440. The train is also very easy to take. You can access it just an elevator ride upstairs and the cost will vary. Visit the [Haneda Airport Website](#) for more information.

Q: What is the nearest train station to Camp Zama?

A: [Sobudae-Mae](#) is the nearest train station to Camp Zama. It is on the Odakyu line.

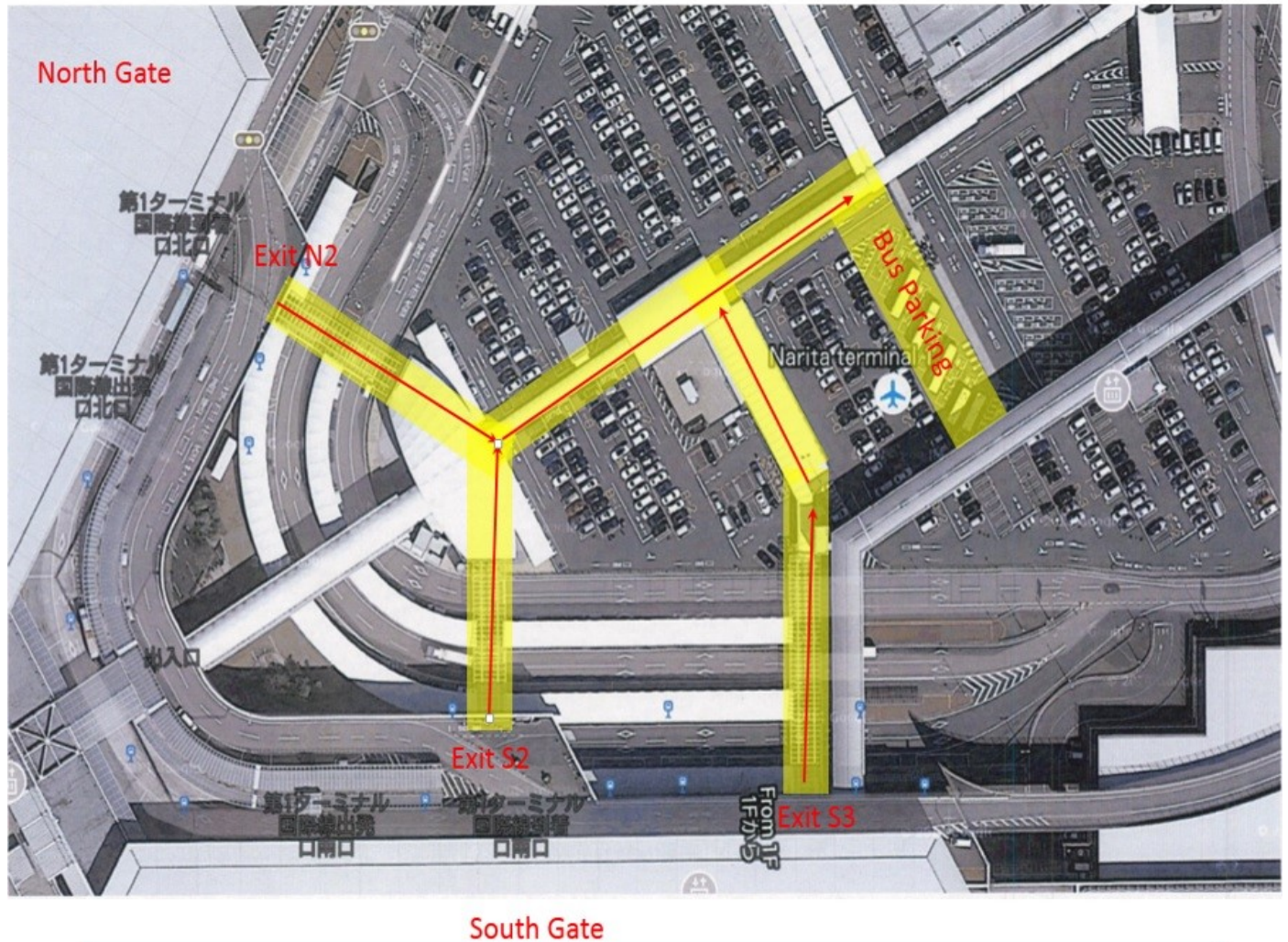
Google Maps is an invaluable tool when travelling. Check with your internet provider to make sure you will have internet access while visiting.

In This Issue

- Arriving in Japan
- Camp Zama Lodging
- Dining
- Points of Interest

Narita Shuttle to Camp Zama

Arriving at Terminal 1



If you have any questions, please call Camp Zama Outdoor Recreation at DSN 263-4671 or LOCAL 046-407-4671. If you require assistance outside of operating hours, please visit the Narita Airport Information Counters that are located throughout Terminal 1, or the DOD Liaison Counter in the North Wing of Terminal 1. In the event of an emergency outside of operating hours, please call 080-6757-9912.

Camp Zama Outdoor Recreation Operating Hours:
Mon-Fri 0900-1730 / Sat & Sun 0800-1600

Where to Stay

If you are a Military ID holder, Camp Zama Lodging is your best bet. The Narita Shuttle Bus will drop you off directly at lodging from the airport. The modestly rooms are clean, the staff is pleasant, they are modestly priced and offer free continental breakfast. Please visit their website for contact information and room

Contact

Zama Army Lodging
Bldg. 552

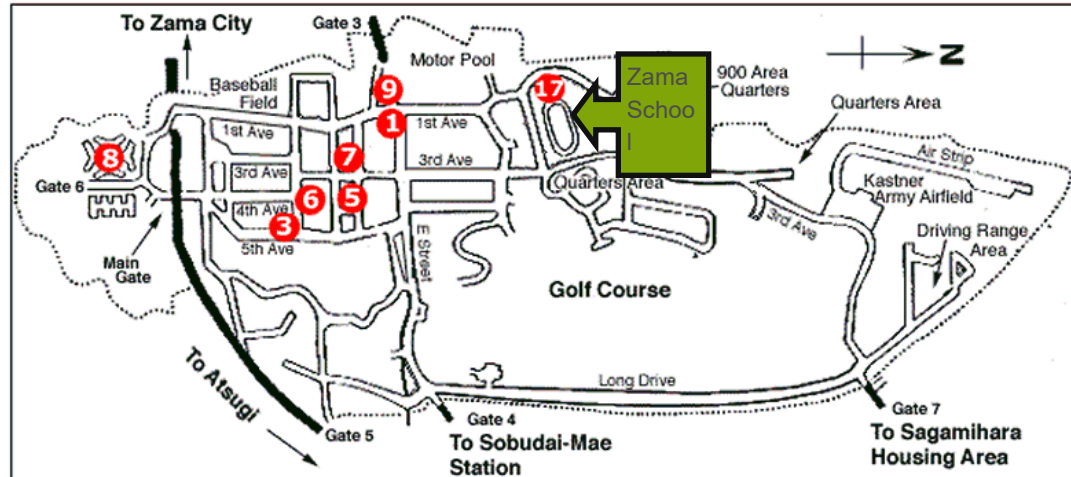
Tel:
+81 (046)-407-3830

Military DSN Tel:
(315)263-3830

rates.

If you prefer to stay near Camp Zama but not on Camp Zama, please visit Hotels.com, or your favorite hotel booking website to find the right place for you.

Main Base



1. Car Care Center
3. Shoe Repair
5. Home Traditions / AT&T Surf Shop/ Concessions
6. Main Store/ Food Court/ Shoppette
7. TBA
8. Main Cafeteria
9. MCSS
17. Zama School Cafeteria

Photo Caption

Dining Out

Food Court: Burger King, Subway, Anthony's Pizza, and Pop-eye's Chicken

Bowling Alley: Open most days at 1100-2000 or 2100

Camp Zama Community Club: Sports Bar 1100-2200 and Dining Room.

Golf Course: Open for breakfast, lunch, and dinner from 0630-1800.

Off Post: Just outside the 'walking gate' and on the way to Sobudae-mae station, you will find a wide variety of dining options available to you. If you feel like ramen, Indian, wings, or traditional Japanese fare, you can find it just a short walk away.

*Participants with a military ID card will be able to shop at all shoppettes and the commissary.

What Else?

Base Library

Monday	10 a.m. - 8:30 p.m.
Tuesday	10 a.m. - 8:30 p.m.
Wednesday	10 a.m. - 8:30 p.m.
Thursday	10 a.m. - 8:30 p.m.
Friday	10 a.m. - 6 p.m.
Saturday	10 a.m. - 6 p.m.
Sunday	10 a.m. - 6 p.m.

Yano Pool

Monday	5 a.m. - 7:30 p.m.
Tuesday	5 a.m. - 7:30 p.m.
Wednesday	5 a.m. - 7:30 p.m.
Thursday	5 a.m. - 7:30 p.m.
Friday	5 a.m. - 7:30 p.m.
Saturday	10 a.m. - 6 p.m.
Sunday	10 a.m. - 6 p.m.

The Boxz Karaoke Room

Monday	Closed
Tuesday	10 a.m. - 10:30 p.m.
Wednesday	10 a.m. - 10:30 p.m.
Thursday	10 a.m. - 10:30 p.m.
Friday	10 a.m. - 2:30 a.m.
Saturday	10 a.m. - 2 a.m.
Sunday	10 a.m. - 10:30 p.m.

Contact Us

Don't hesitate to call or email if you have any questions.

Jodi Weiler

Work:

Jodi.weiler@pac.dodea.edu

Personal:

weilerjodi@gmail.com

080-5848-6908

Participants with a Military ID will be able to shop at all shoppettes and the commissary.

"An investment in knowledge pays the best interest." ~Benjamin Franklin